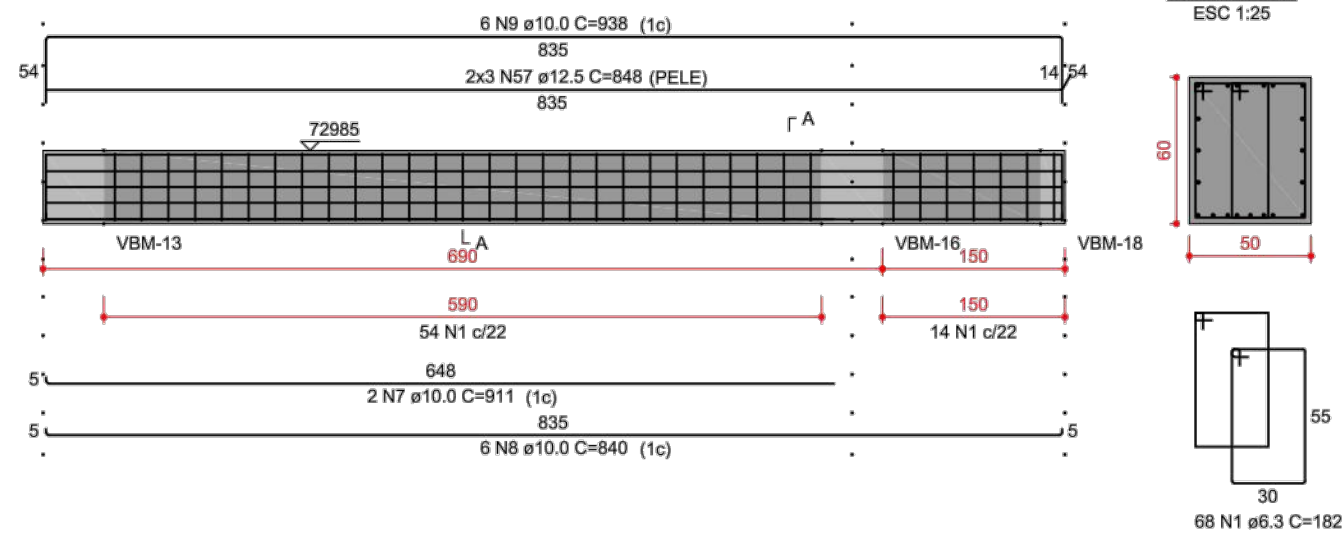
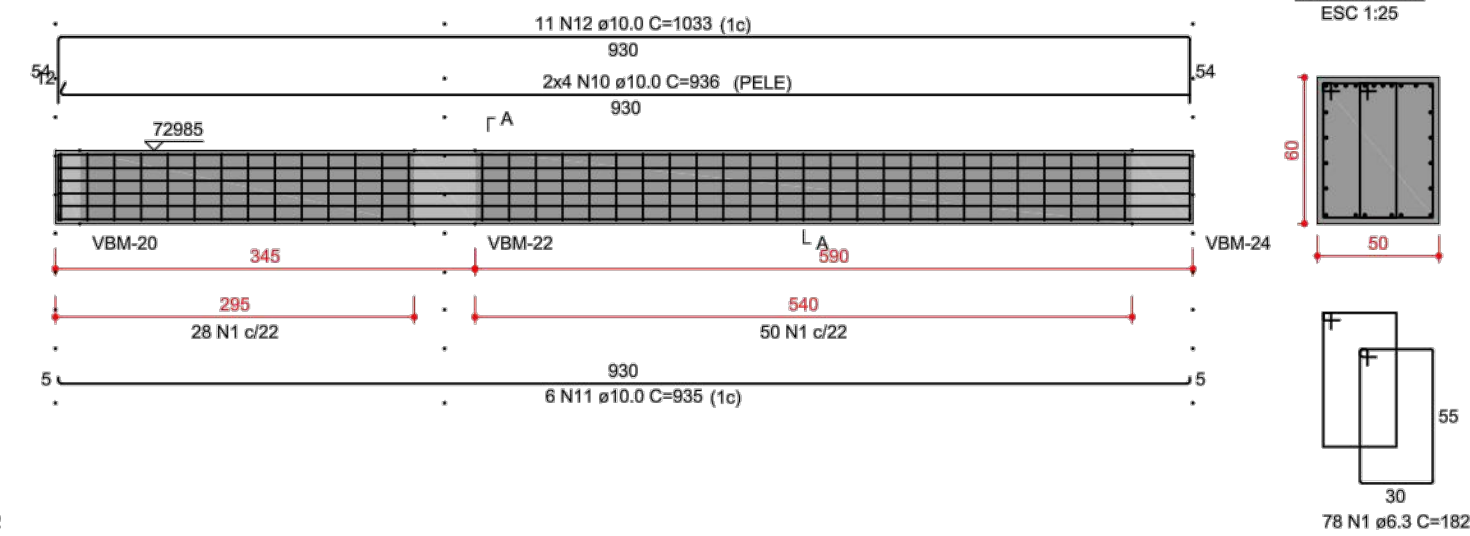


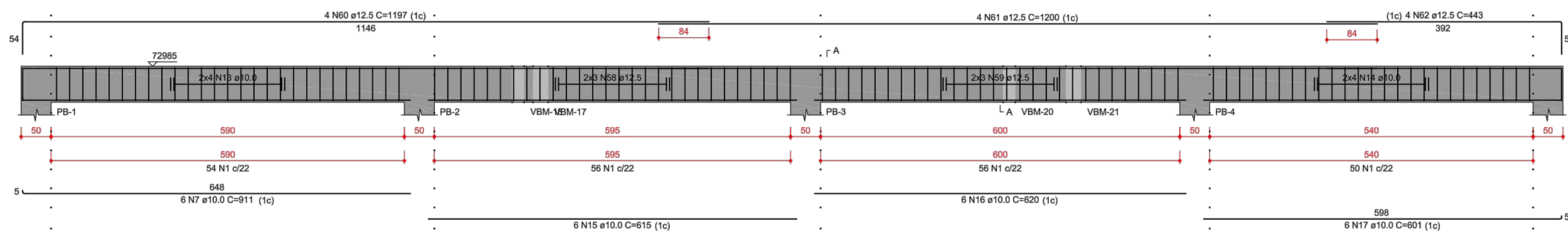
VBM-1 (50 x 60)



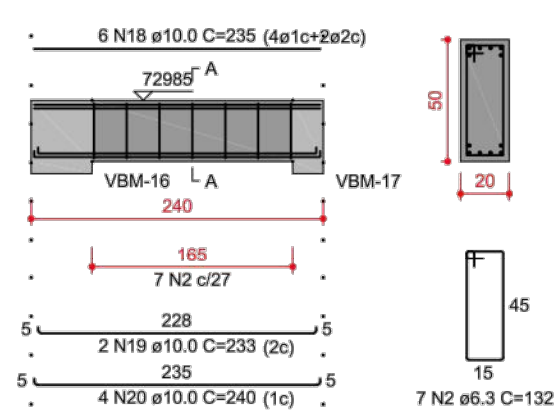
VBM-2 (50 x 60)



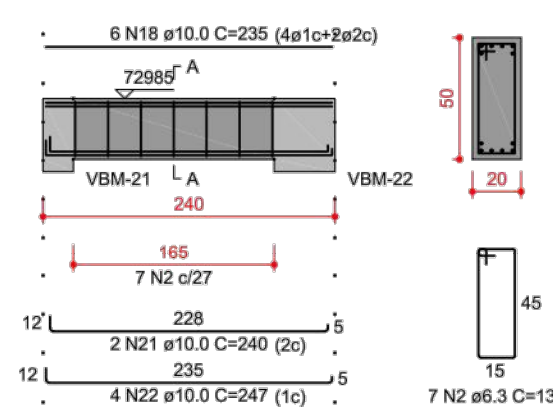
VBM-3 (50 x 60)



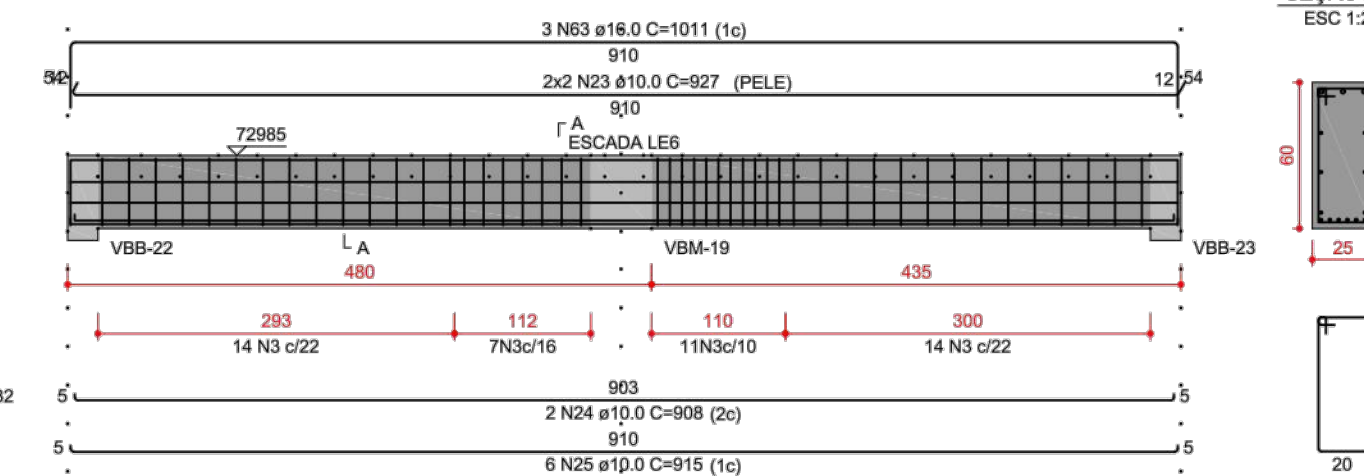
VBM-4 (20 x 50)



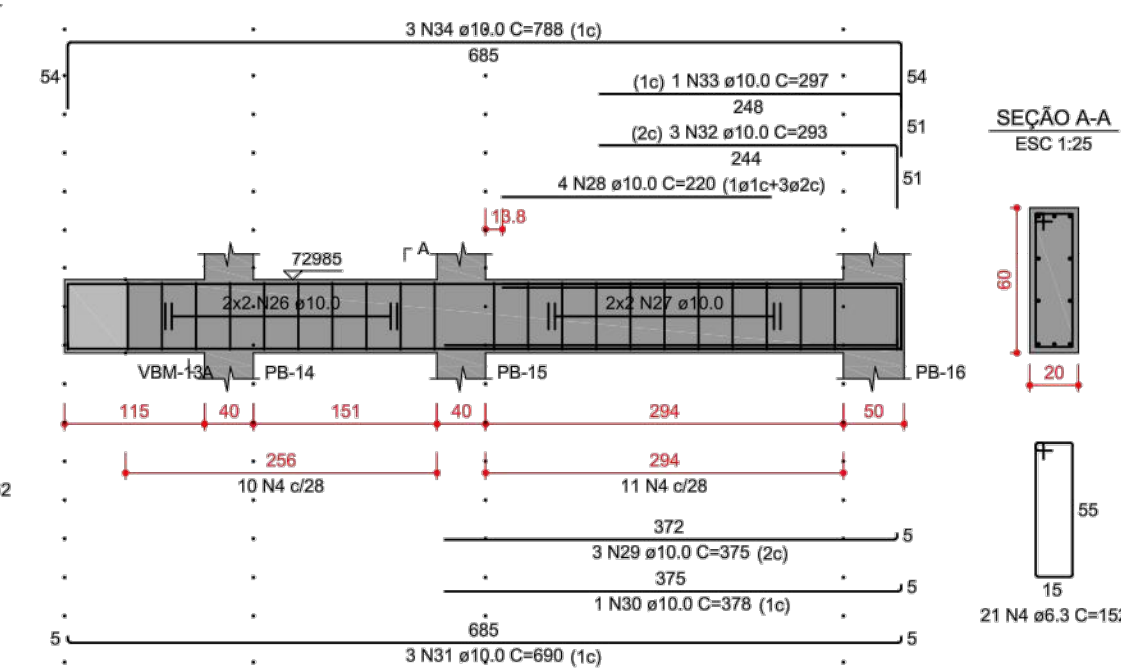
VBM-5 (20 x 50)



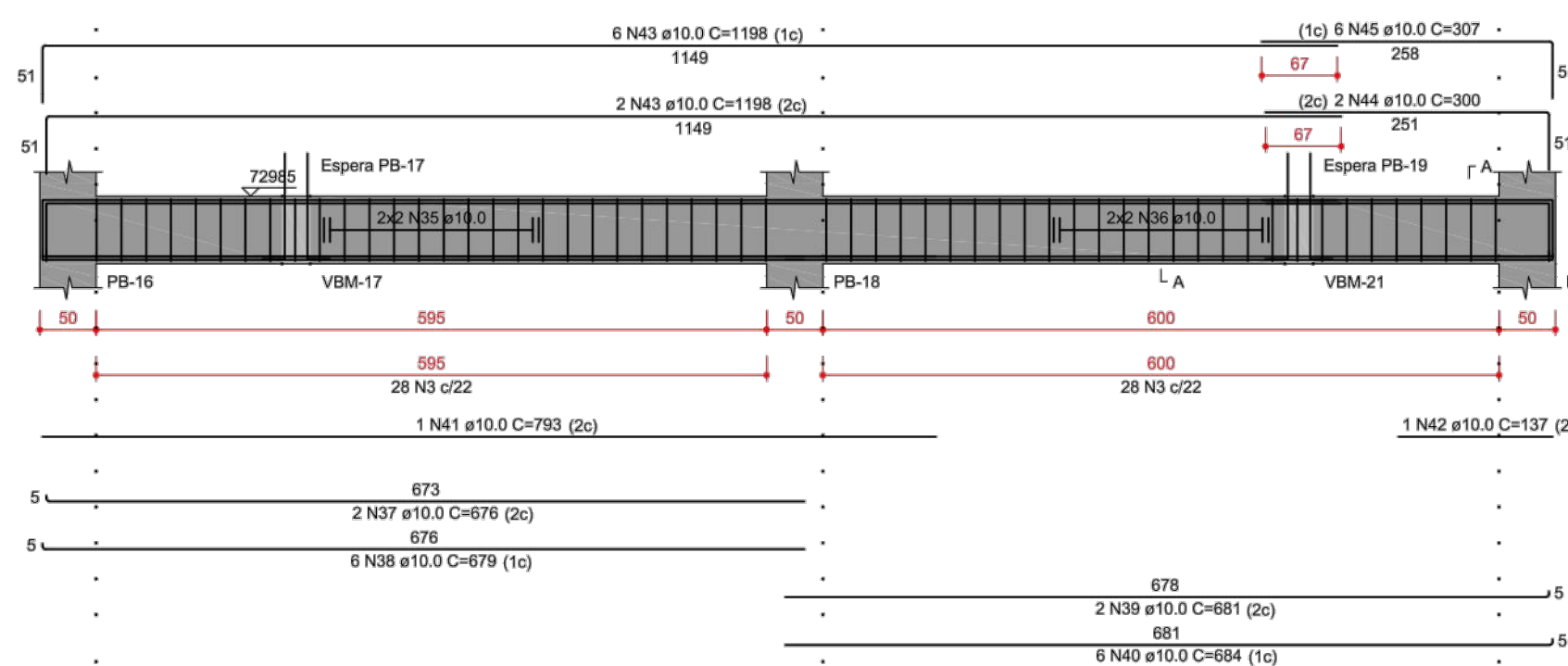
VBM-6 (25 x 60)



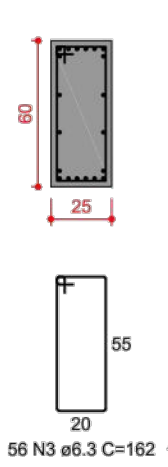
VBM-8 (20 x 60)



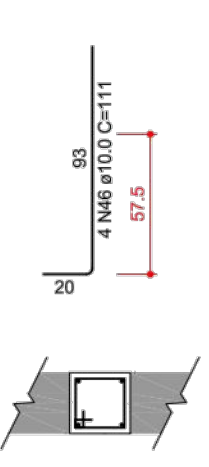
VBM-9 (25 x 60)



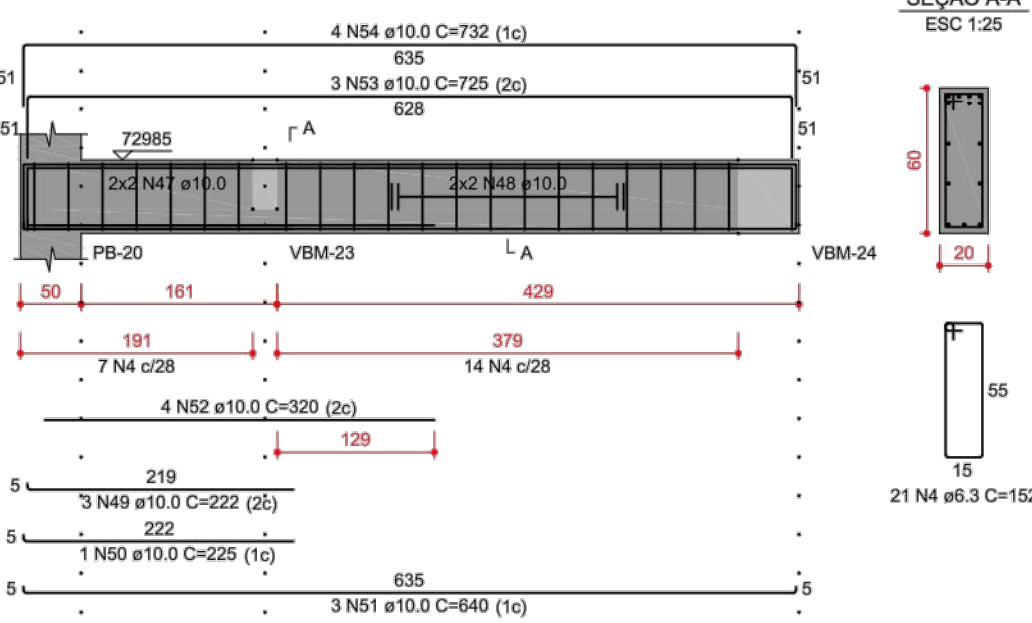
SEÇÃO A-A



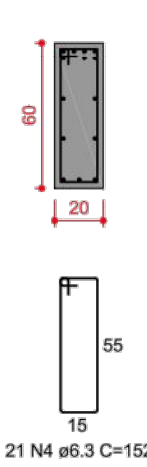
SEÇÃO A-A



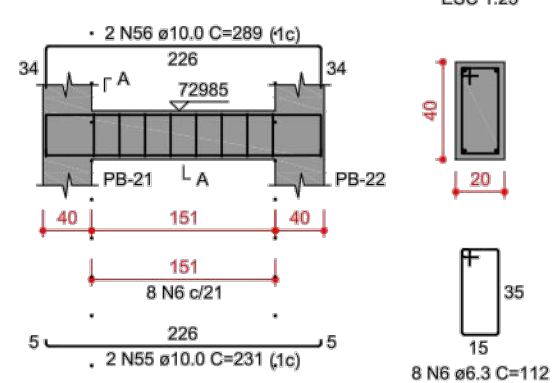
VBM-10 (20 x 60)



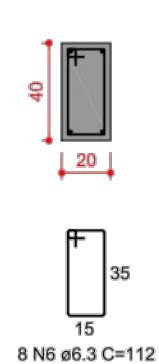
SEÇÃO A-A



VBM-11 (20 x 40)



SEÇÃO A-A



RELAÇÃO DO AÇO

AÇO	N	DIAM (mm)	QUANT	C.UNIT (cm)	C.TOTAL (cm)
VBM-1	1	6.3	362	182	91884
VBM-2	2	6.3	14	132	1848
VBM-3	3	6.3	102	162	19124
VBM-4	4	6.3	42	152	6384
VBM-5	5	6.3	10	92	920
VBM-6	6	6.3	8	112	896
VBM-7	7	10.0	8	911	5208
VBM-8	8	10.0	6	840	5040
VBM-9	9	10.0	6	938	5628
VBM-10	10	10.0	6	936	5480
VBM-11	11	10.0	6	935	5610
	12	10.0	11	1033	11363
	13	10.0	8	corr	5480
	14	10.0	8	corr	5080
	15	10.0	6	615	3690
	16	10.0	6	620	3720
	17	10.0	6	601	3606
	18	10.0	12	235	2820
	19	10.0	2	233	466
	20	10.0	4	240	960
	21	10.0	2	240	480
	22	10.0	4	247	988
	23	10.0	4	927	3708
	24	10.0	2	908	1816
	25	10.0	6	915	5490
	26	10.0	4	corr	1364
	27	10.0	4	corr	1516
	28	10.0	4	220	880
	29	10.0	3	375	1125
	30	10.0	1	378	378
	31	10.0	3	690	2070
	32	10.0	3	293	879
	33	10.0	1	297	297
	34	10.0	3	788	2364
	35	10.0	4	corr	2760
	36	10.0	4	corr	2780
	37	10.0	2	676	1352
	38	10.0	6	679	4074
	39	10.0	2	681	1362
	40	10.0	6	684	4104
	41	10.0	1	793	793
	42	10.0	1	137	137
	43	10.0	6	111	666
	44	10.0	2	300	600
	45	10.0	6	307	1842
	46	10.0	6	111	666
	47	10.0	4	corr	824
	48	10.0	4	corr	1776
	49	10.0	3	222	666
	50	10.0	1	225	225
	51	10.0	3	640	1920
	52	10.0	4	320	1280
	53	10.0	3	725	2175
	54	10.0	4	732	2928
	55	10.0	2	231	462
	56	10.0	2	269	538
	57	12.5	6	848	5088
	58	12.5	6	corr	4140
	59	12.5	6	corr	4170
	60	12.5	4	1197	4788
	61	12.5	4	1200	4800
	62	12.5	4	443	1772
	63	16.0	3	1011	3033

RESUMO DO AÇO

AÇO	DIAM (mm)	C.TOTAL (m)	PESO ~ 10% (kg)
CA50	6.3	924.6	246.9
	10.0	1326.2	899.4
	12.5	247.6	262.4
	16.0	30.3	52.7

PESO TOTAL (kg)

CA50 1463.3

Volume de concreto (C-30) = 18.70 m³

Área de forma = 133.41 m²

PRÉDIO BOULEVARD - ARMAÇÃO DE VIGAS DO PAV. MEZANINO

FOLHA:

25

MUNICÍPIO DE CARAPICUÍBA
SECRETARIA DE DESENVOLVIMENTO URBANO
SETOR DE PROJETOS

OBRA: Construção de Passarela de Interligação dos Terminais Rodoviários Metropolitanos e Municipal com a Estação CPTM e Av. Francisco Pignatari

LOCAL: Av. Governador Mário Covas e Av. Francisco Pignatari

RECURSO/CONVÊNIO: XXXXXXXXXXXXXXXXXXXX

ART/RR: 28027230172709526

TABELA DE ÁREAS

Total de áreas	
Área total	XX m2
Área de intervenção	1.074,8 m2

DIORGENS GODÓI DA SILVA
ENGENHEIRO CIVIL
CREA-SP Nº 5069838630

DATA: 18/02/2022

ESCALA: INDICADA

DESENHO ELABORADO POR DIORGENS GODÓI DA SILVA
ENGENHEIRO CIVIL
CREA-SP nº 5069838630

REVISÃO NÚMERO: 2

MÊS: 02/2022